

Manual for Mainsheet Traveller on tracks with stop holes

General

The Rutgerson mainsheet system is built by modules, making it easy to adapt the system to different boat types and equipment requirements. Becket, sheaves and cleats can be moved between end stops and traveller in different combinations.

Mainsheet travellers are fitted with the unique Roll-link chain. The linked rollers divide the pressure over a substantially larger surface than ball bearings, which leads to maximum performance and endurance. Travellers are fitted with either a stand-up solution or a shackle. The stand-up solution is designed so that the block is always kept upright, even without load. Changing between the shackle and the stand-up is easy.

Mainsheet system alternatives:

- Traveller with spring loaded plunger stopper and track with stop holes. The track with stop holes is available in four dimensions: 32mm standard, 32mm high beam, 50mm standard and 50mm high beam.
- Traveller with sliding bolt and track without stop holes. The track without stop holes is available in four dimensions: 32mm standard, 32mm high beam, 50mm standard and 50mm high beam.

Maintenance

Rinse the fittings with fresh water occasionally.

Warranty

All deck fittings from Rutgerson Marin carry a three year warranty against defects in materials manufacture.

1. Fitting the track with stop holes:

For beam tracks, read the instructions on the last page. Then continue with the instructions on this page.

Mark and drill holes for the screws (M6 for 32mm tracks and M8 for 50mm track).

Apply sealant around the holes. Place the cup washers over the sealant.

Push in the stainless steel screws (For 32mm track flushed M6 screws DIN 963, 965 and for 50mm track flushed M8 DIN 963m 965) into the stop holes on the track and then through the washers and into the drilled holes. Fit washers and tighten the nuts on the inside of the hull.

2. Fitting the plunger stopper:

Pull the spring loaded knob upwards and slide the plunger stopper onto the track (2A). When the knob is release, the plunger stopper relocates into the track stop hole.

3. Fitting the mainsheet traveller:

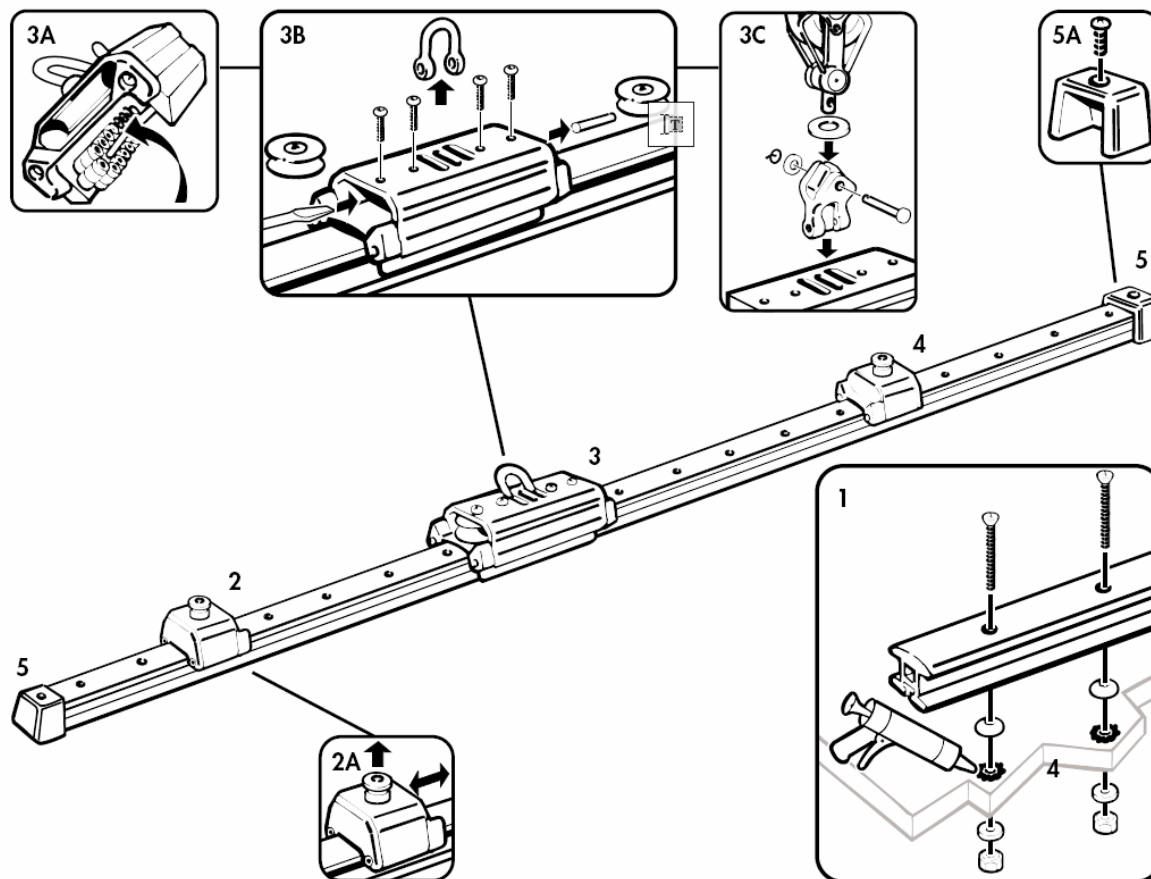
Place the two Roll-link chains to the insides of the traveller (3A) and slide it onto the track. It is possible to change between shackle and stand-up (3B). When using the stand-up solution a washer is to be placed between the block and the stand-up (3C).

4. Fitting the end stopper:

Follow step 3

5. Fitting the composite end stops:

Place the end stops over the edges of the track and tighten the screw (5A).



Rutgerson Marin AB©
Mjölkeliksgatan 21,
442 66 Marstrand, Sweden
Phone: +46 (0) 303 20 66 50
Fax: +46 (0) 303 608 89
www.rutgerson.se
E-mail: postmaster@rutgerson.se

Instructions for Rutgerson Mainsheet System

RUTGERSON
Best in action

Mainsheet traveller with sliding bolt

1. Fitting track:

For beam tracks, read the instructions on the last page. Then continue with the instructions on this page.

Slide the screw heads along the groove underneath track (For 32mm track stainless steel M6 hexagonal screws DIN 931 and for 50mm track stainless steel M8 hexagonal screws DIN 931). Mark where the screw holes should be (recommended maximum distance between the screws is 75mm (2,95in) and drill the holes.

Apply sealant around the holes. Place cup washers over the sealant.

Place the track with the screws on top of the holes so that the screws go through the washers and drilled holes.

Fit washers and tighten the nuts on the inside of the hull.

2. Fitting the control end stop:

Fit the control end stop at one end of the track (2A).

Unscrew the three upper screws on the control end stop and push the product over one end of the as far as is possible. Tension the screws so that they leave marks on the track. Remove the end stop again and drill M6 threaded holes through the track.

Slide the end stop onto the track and fasten the screws through the drilled holes in the track.

3. Fitting the traveller:

Place the two Roll-link chains to the insides of the traveller (3A) and slide it onto the track.

It is possible to change between shackle and stand-up (3B).

When using the stand-up solution a washer is to be placed between the block and the stand-up (3C).

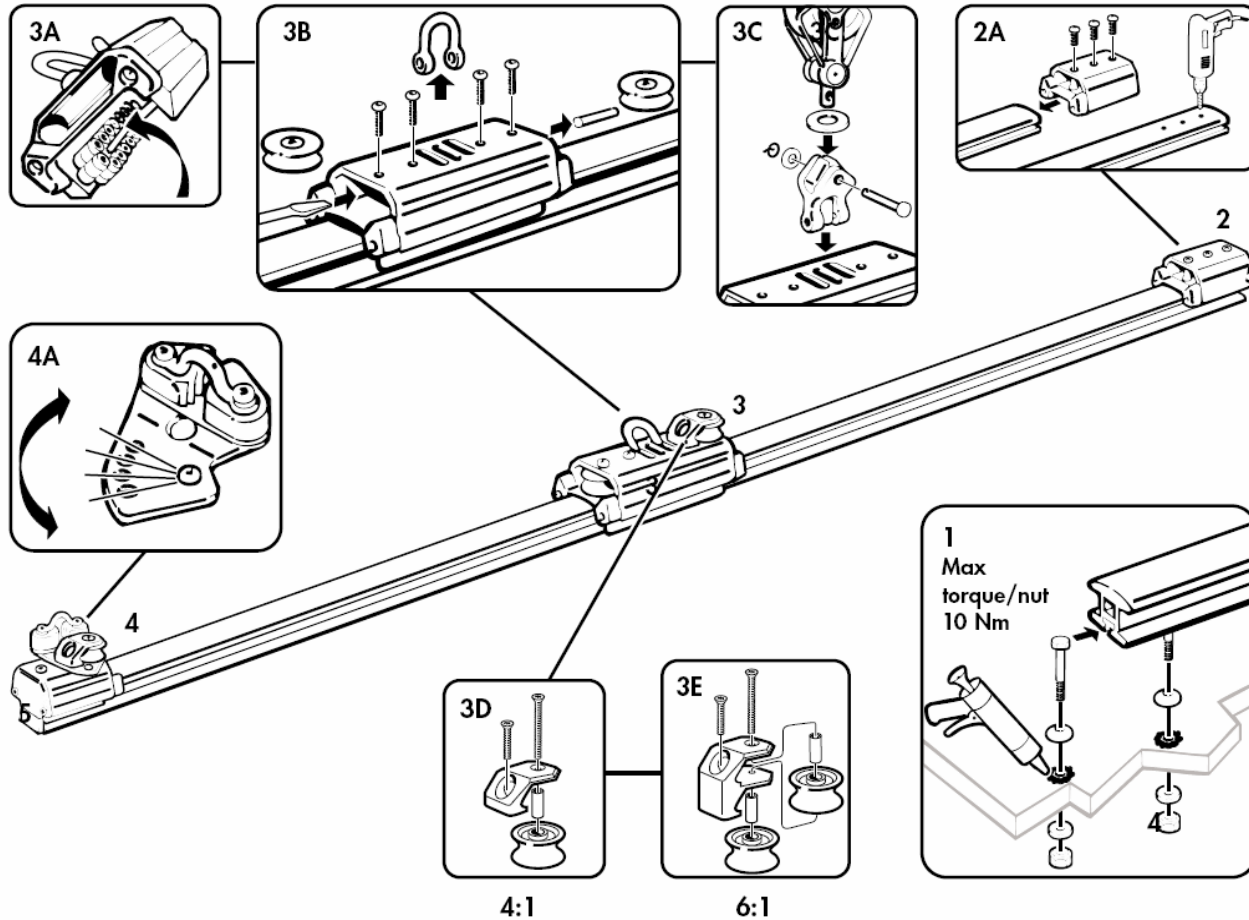
Some fitting alternatives:

Ratio 4:1 (3D) 1 extra sheave

Ratio 6:1 (3E) 2 extra sheaves

The extra cleat can be fixed into four different positions (4A).

The fitting of extra sheaves and/or cleat should be done simultaneously as fitting the control end stop (step 2). The long screws included in the extra set should be used instead of the standard ones.

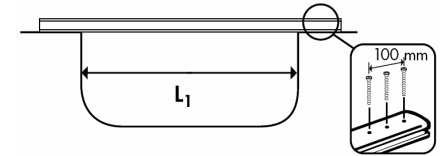


Fitting Beam Track

Fitting as per figure A

Use at least 3 screws per 100 mm and large washers on each side of the track when fitting to the cockpit bench.

| Track type | Maximum span (L ₁) |
|-----------------|--------------------------------|
| 32 mm Standard | 600 mm |
| 32 mm High Beam | 800 mm |
| 50 mm Standard | 600 mm |
| 50 mm High Beam | 1000 mm |



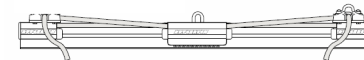
Fitting as per figure B

Fitting using special Rutgeron fittings.

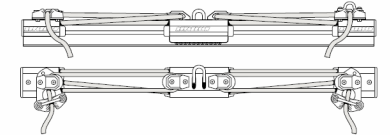
| Track type | Maximum span (L ₂) |
|-----------------|--------------------------------|
| 32 mm Standard | 500 mm |
| 32 mm High Beam | 650 mm |
| 50 mm Standard | – |
| 50 mm High Beam | – |

Ratio alternatives, floating Mainsheet system

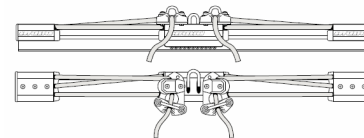
Ratio 2:1



Ratio 4:1



Ratio 3:1



Ratio 6:1

