

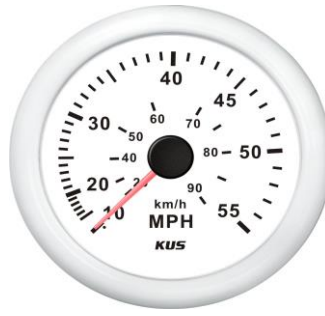
---

---

## Product Data Sheet

---

---



---

**Description:**

The Speedometer gauge precisely shows the actual speed with the advantages of high precision, quick location confirmation, and short start up time. Most importantly, the Speedometer gauge is easy to setup and can be used in all vehicles, boats, and off-road vehicles (12V/24V).

---

**Product Type:**

Speedometer

---

**Product Name:**

CPOB

---

**Bezel:**

SS 316 Stainless Steel

Stainless Steel in Black

Plastic in Black/White

---

**Mounting Dimension:**

85mm, 3 3/8"

---

**Protection Rating:**

IP67 for front; works up to 1m under water

---

**Input Signal:**

Pilot tube provides pressure signal

---

**Indicating Range:**

0 - 55 MPH or 0 - 65 MPH

---

**Operating Voltage:**

12/24V

---

**Background light**

Red/Yellow

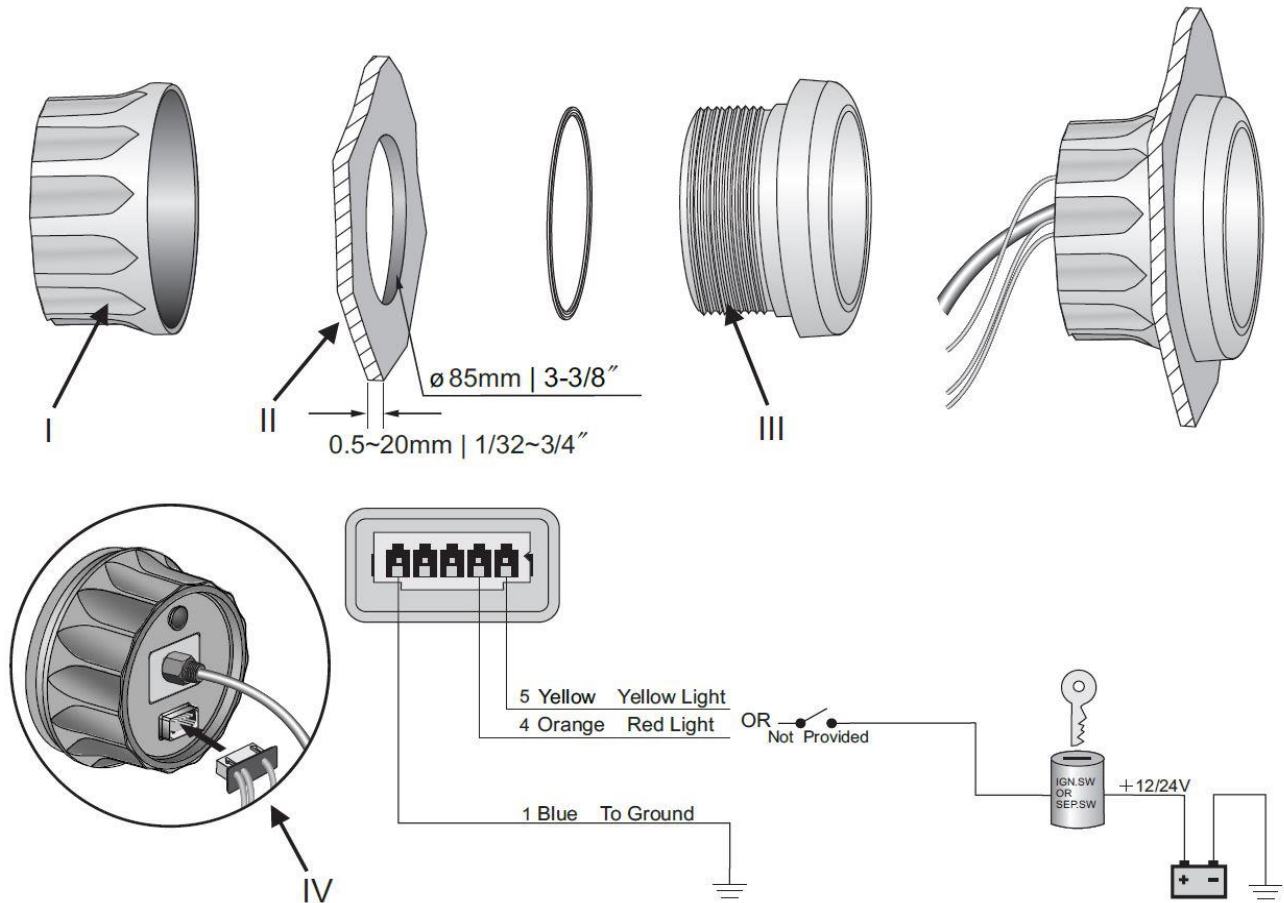
---

**Connector:**

Multi-plug socket connection

---

## Installation Instructions



## INSTALLATION STEPS

1. Cut a 85 mm(3 3/8") diameter panel hole(# II).You will need a minimum clearance of 85 mm(3 3/8") behind the panel to fit the gauge(# III).
2. Place the gauge body (# III) in the panel hole(# II),and then fasten it with fastening ring(# I).
3. Insert wire harness into port, and connect the ventilation hose with the bronze fitting of speedometer. Please make sure the connection is tight.
4. According to wiring instruction to do wire connection. Gauge can be connected to 12VDC and 24VDC power directly.
5. Select either red or yellow backlight by your fondness.